



support for

OpenSynergy’s Blue SDK RapidLaunch is a Linux-based framework for powerful and efficient GENIVI Bluetooth development. It is based on OpenSynergy’s Blue SDK Bluetooth protocol stack and suite of automotive-based profiles. Blue SDK RapidLaunch reduces the complexity of developing a Bluetooth solution on Linux by consolidating the rich number of APIs associated with the native stack and profile sets into a condensed set of powerful, yet simple to use APIs. RapidLaunch easily handles complex use cases such as concurrent multi-profile use as well as multiple device connections. RapidLaunch takes care of the heavy lifting when it comes to Bluetooth development.

Benefits

- Simple to use
- Decreases development costs
- Accelerates time to market
- Based on the highly respected Blue SDK core stack and Blue SDK profiles which are used on tens of millions of devices in the market
- Source code based product provides customer control and flexibility
- Keeps Bluetooth implementation isolated from the kernel to avoid kernel compatibility issues
- Supported by a mature and longstanding Bluetooth development team

Specifications

- Supports the Bluetooth 4.2 Core Specification and all the latest Bluetooth profile specifications
- Full support of GENIVI™ Bluetooth Common API tool 3.x (based on Linux 4.x)

Features

- Bluetooth Linux Integration with minimal development effort
- Simplified Bluetooth APIs over DBUS allows for several applications to easily access the Bluetooth services
- Full support for the GENIVI™ Bluetooth API
- Support for the key Bluetooth profiles used in automotive infotainment
- Delivered in source code that can be modified and configured to the customer’s needs

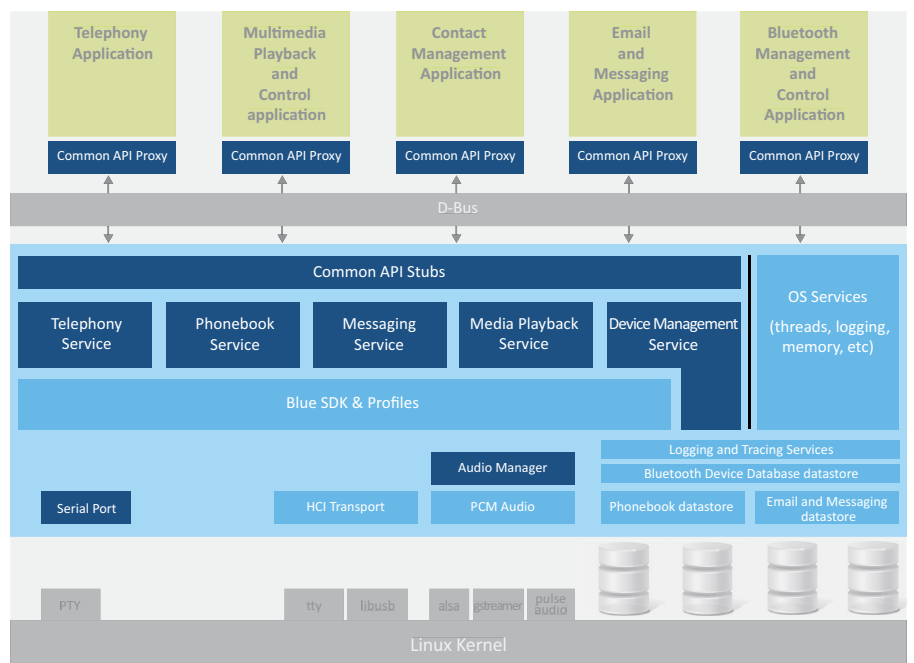


Fig.: Represents the daemon architecture with all core stack components and profiles running in the context of a user space Linux daemon.

- Blue SDK RapidLaunch components
- Blue SDK core stack and profile components

Additional software components to be used with Blue SDK RapidLaunch

- Blue SDK core stack
- Blue SDK Handsfree Profile
- Blue SDK A/V Profiles
- Blue SDK Phonebook Access Profile
- Blue SDK Messaging Access Profile
- OpenSynergy’s Voice SDK (optional echo cancellation and noise reduction solution)

Linux Bluetooth Integration complexity is easily managed

Blue SDK RapidLaunch incorporates code that significantly reduces the number of APIs that are required in terms of controlling both the Bluetooth profile and stack operation. Building on the Linux Quickstart features (transport interfaces, audio integration, PTY integration for serial port, and logging services) found in Blue SDK, RapidLaunch also provides DBUS objects that permit easy access to the Bluetooth API from various application contexts.

Interoperability with mobile devices

Dealing with mobile phone interoperability is one of the most challenging and costly aspects to account for when developing a Bluetooth automotive product. OpenSynergy’s highly experienced Bluetooth development team has taken into account the challenge of interoperability, reducing the engineering risk significantly. This application framework can accelerate time to market by reducing issues related to inter-device operation.

Fully integrated with Blue SDK and automotive profiles

The Bluetooth stack (Blue SDK) and suite of automotive profiles (see list above) have been pre-integrated with RapidLaunch, reducing both development effort and cost, resulting in a decreased time to market. The Blue SDK and Profiles are individual SDKs that are purchased separately.

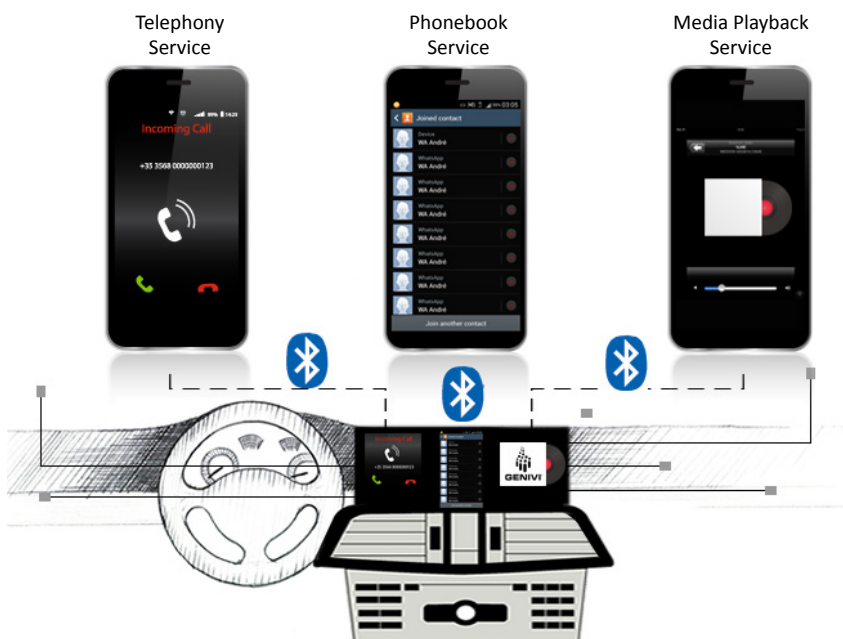


Fig.: Multiple phone connections are easily managed by Blue SDK RapidLaunch

Technical Support

- **Blue SDK**
bluesdk@opensynergy.com

Contact

OpenSynergy GmbH

Rotherstraße 20
D – 10245 Berlin
Germany

Phone: +49 30 6098 540 - 0
Fax: +49 30 6098 540 - 99
E-mail: sales@opensynergy.com
Web: www.opensynergy.com

OpenSynergy GmbH

Starnberger Str. 22
D-82131 Gauting / Munich
Germany

Phone: +49 89 893 413-33
Fax: +49 89 893 413-10
E-mail: sales@opensynergy.com
Web: www.opensynergy.com

OpenSynergy, Inc. (USA)

765 East 340 South
Suite 106
American Fork, Utah 84003

Phone: +1 (619) 962 1725
E-mail: sales@opensynergy.com
Web: www.opensynergy.com

Distributors

France

Alpwise
Tel: +33 4 7622 0224
AlpwiseSales@alpwise.com
www.alpwise.com

Japan

A.I. Corporation
Tel: +81 3 3493 7981
sales2@aicp.co.jp
www.aicp.co.jp